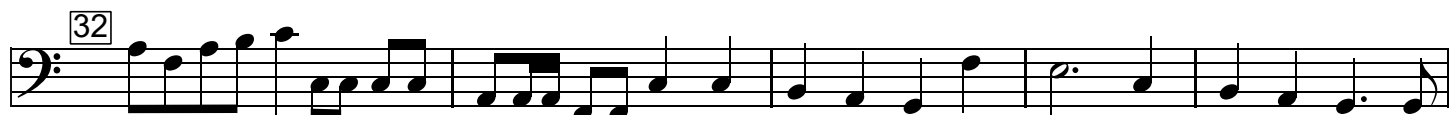


Hallelujah

from Messiah

G. F. Handel

Cello 2



46

50

54

58

62

66 *tr*

72

77

82

87

91

Detailed description: This image shows a page of musical notation for a cello part, consisting of ten staves. Each staff begins with a measure number in a box: 46, 50, 54, 58, 62, 66, 72, 77, 82, and 91. The notation is in bass clef and includes various rhythmic values such as eighth, sixteenth, and thirty-second notes, as well as rests and accidentals. A trill is indicated by the 'tr' symbol above the final measure of the sixth staff. The piece concludes with a double bar line at the end of the tenth staff.